

A Promise Fulfilled.

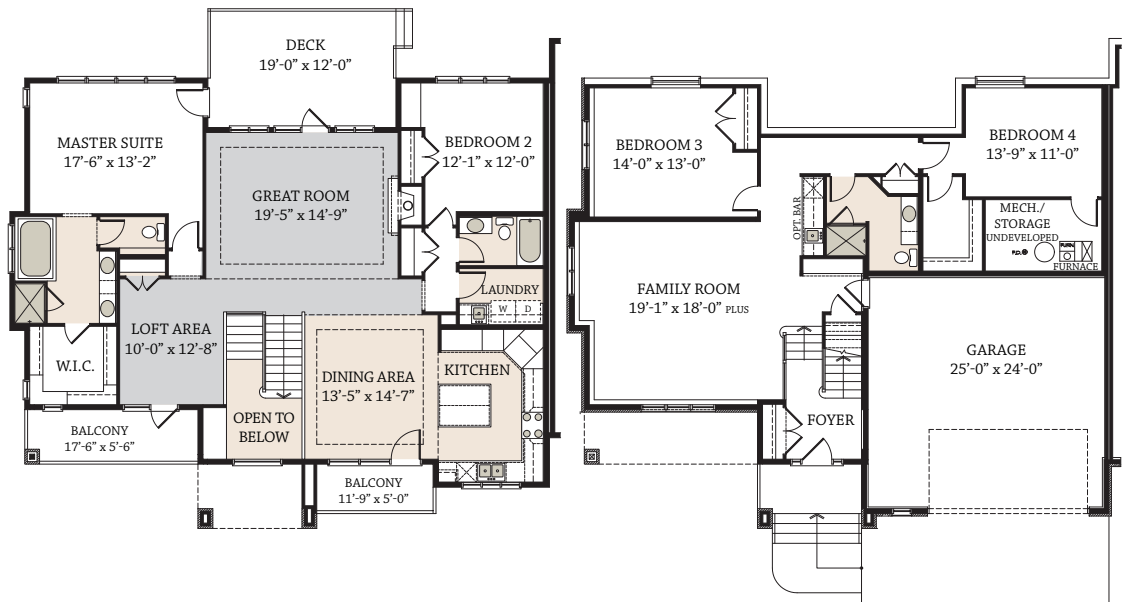
THE PING

3043 sq.ft. Living Area



Artist Rendering

Model E-1



Main: 1791 sq. ft.
Lower: 1252 sq. ft.

- Tile or hardwood
- Hardwood

Main Office:
#115 - 5709 - 2nd Street SE,
Calgary, Alberta
T2H 2W4
P.: 403-385-2231
E.: 403-385-2230



augustafinehomes.com

The plan and elevations shown above is an illustration only and is subject to change without notice. All rights reserved.
This plan and exterior elevation may not be reproduced, in whole or in part, without the written permission of Augusta Fine Homes.

The Promise of Inspired Architecture and Design